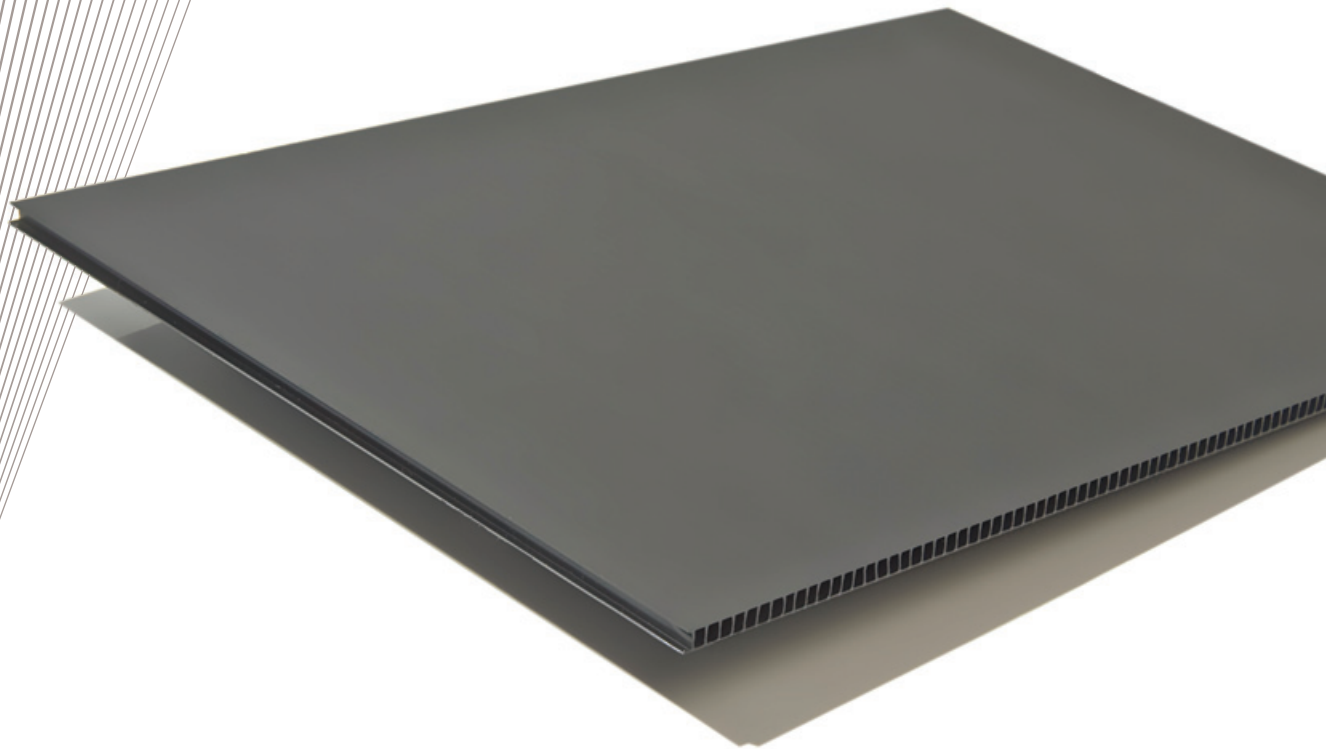


CORUPLAS® & CORUPRINT®

Ampa Plastics was the first plastics manufacturer in South Africa to successfully extrude twin-wall polypropylene, which it sells under the brand names Coruplas® and Coruprint®.

Coruplas® twin-wall polypropylene is a plastic alternative to the traditional corrugated cardboard and paper products used for applications such as packaging and solar panels. Coruprint® is an adapted form of twin-wall polypropylene that has been modified to create a superior flat surface for printing.





Stock availability

COLOUR, FINISH & SHEET SIZE (sheet size: length x width in mm)	SHEET THICKNESS (mm)					
	2.0	3.0	3.5	4.0	5.0	8.0
CORUPLAS® & CORUPRINT®						
WHITE (600 x 400)		●				
WHITE (800 x 600)		●				
WHITE (1530 x 1020)		●	●	●		
WHITE (1830 x 1220)		●	●	●	●	
WHITE (2500 x 1250)	●	●	●	●	●	●
BLACK (2500 x 1250)	●	●	●	●	●	●
YELLOW (600 x 400)		●				
YELLOW (2500 x 1250)		●	●			

STOCK IS SUBJECT TO AVAILABILITY. NON-STANDARD SIZES, THICKNESSES AND COLOURS CAN BE MANUFACTURED ON MINIMUM ORDER.



Key features of twin-wall polypropylene

- Low-cost
- Lightweight yet rigid and shatterproof
- Resistant to flex fatigue
- Waterproof, making it suitable for outdoor use (with appropriate support)
- Suitable for use with food
- Resistant to grease and many other chemicals
- Good acoustic and thermal properties
- Can be die-cut, guillotined, shaped, stapled, creased and ultrasonically welded
- Can be recycled
- Can be produced in a coil

Applications of Coruplas®

- Packaging (eg lightweight boxes, box dividers and anti-scuff sheets between layers of packaged brick and tiles)
- Solar panels (using specially formulated raw material)
- Construction (eg protection for floors and pillars during construction)

Applications of Coruprint®

- Signage (eg screenprinted indoor and outdoor posters, containers for point-of-sale products and promotional flyers)
- Printed packaging products (eg lightweight boxes, box dividers and anti-scuff sheets between layers of packaged brick and tiles)